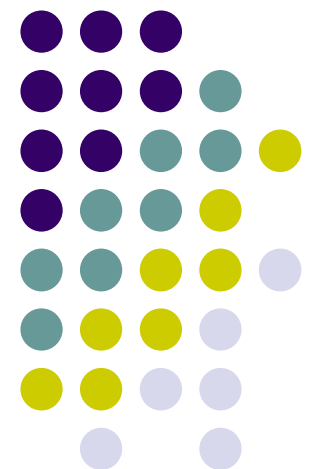


FAO opening remarks

Hafez Ghanem
Assistant Director-General
Economic and Social Development Department

**FAO-IFAD-ILO Workshop on Gaps, trends and
current research in gender dimensions of agricultural and rural
employment: differentiated pathways out of poverty**

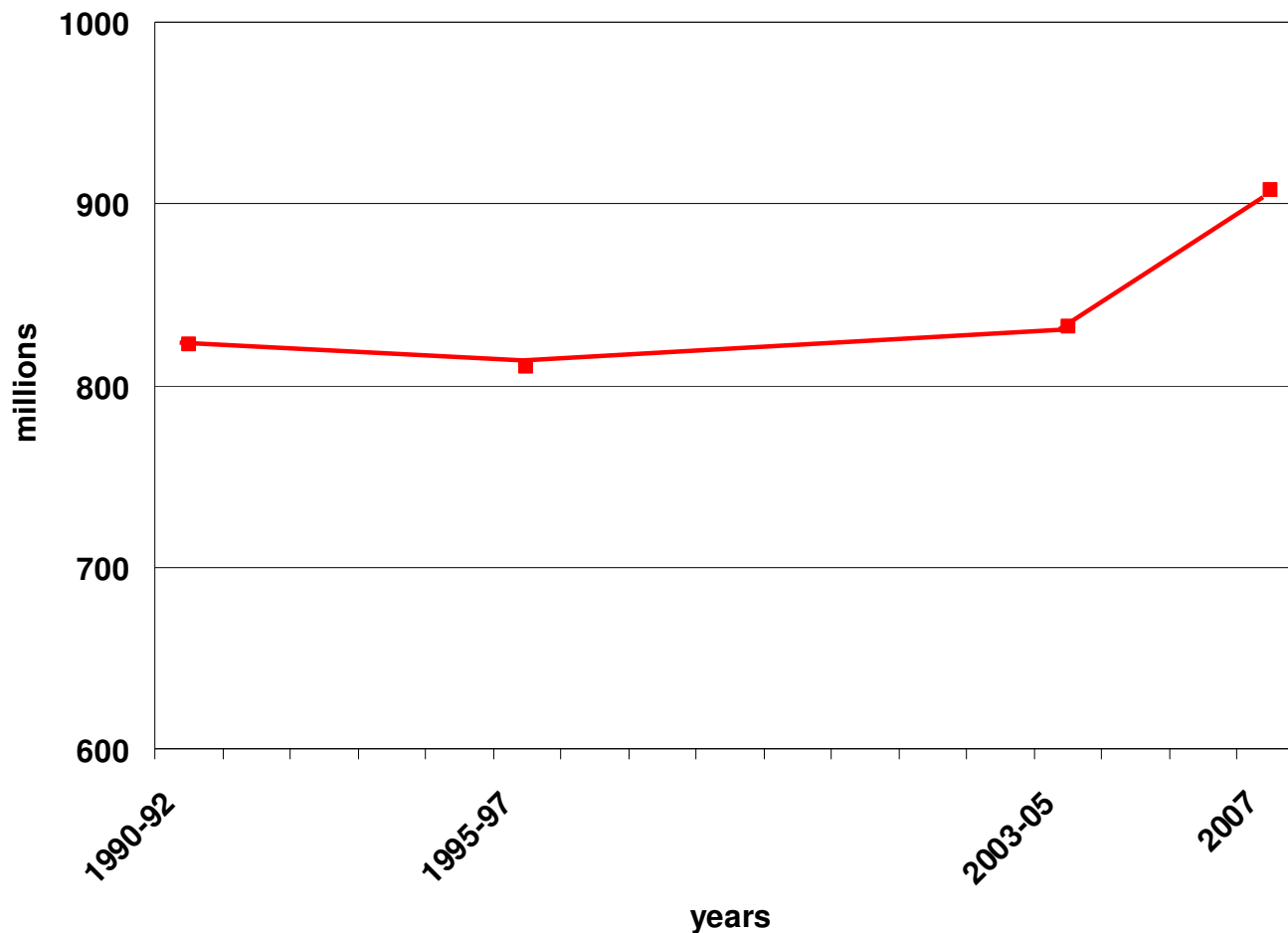
Rome, 31 March - 2 April 2009



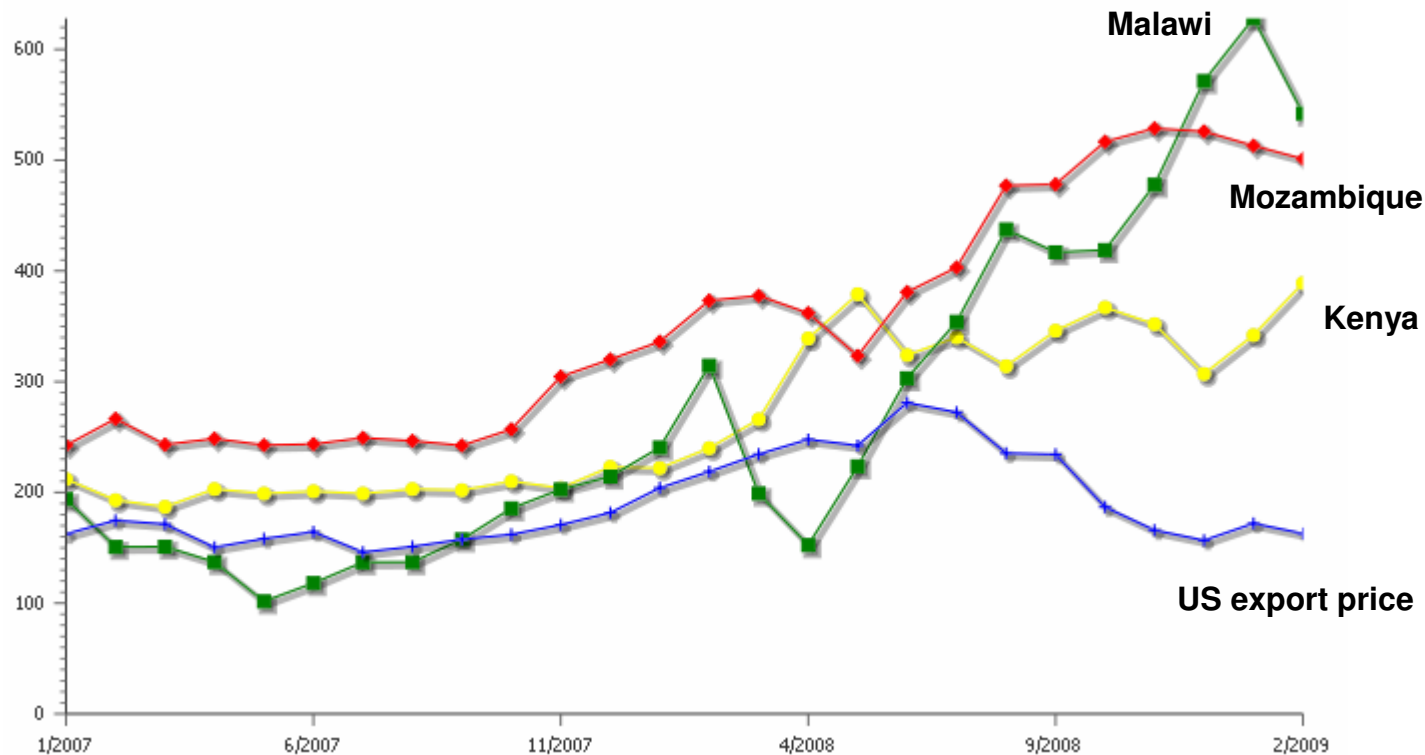
The number of hungry people is increasing



numbers of undernourished in the developing world
1990-92 to 2007 (millions)

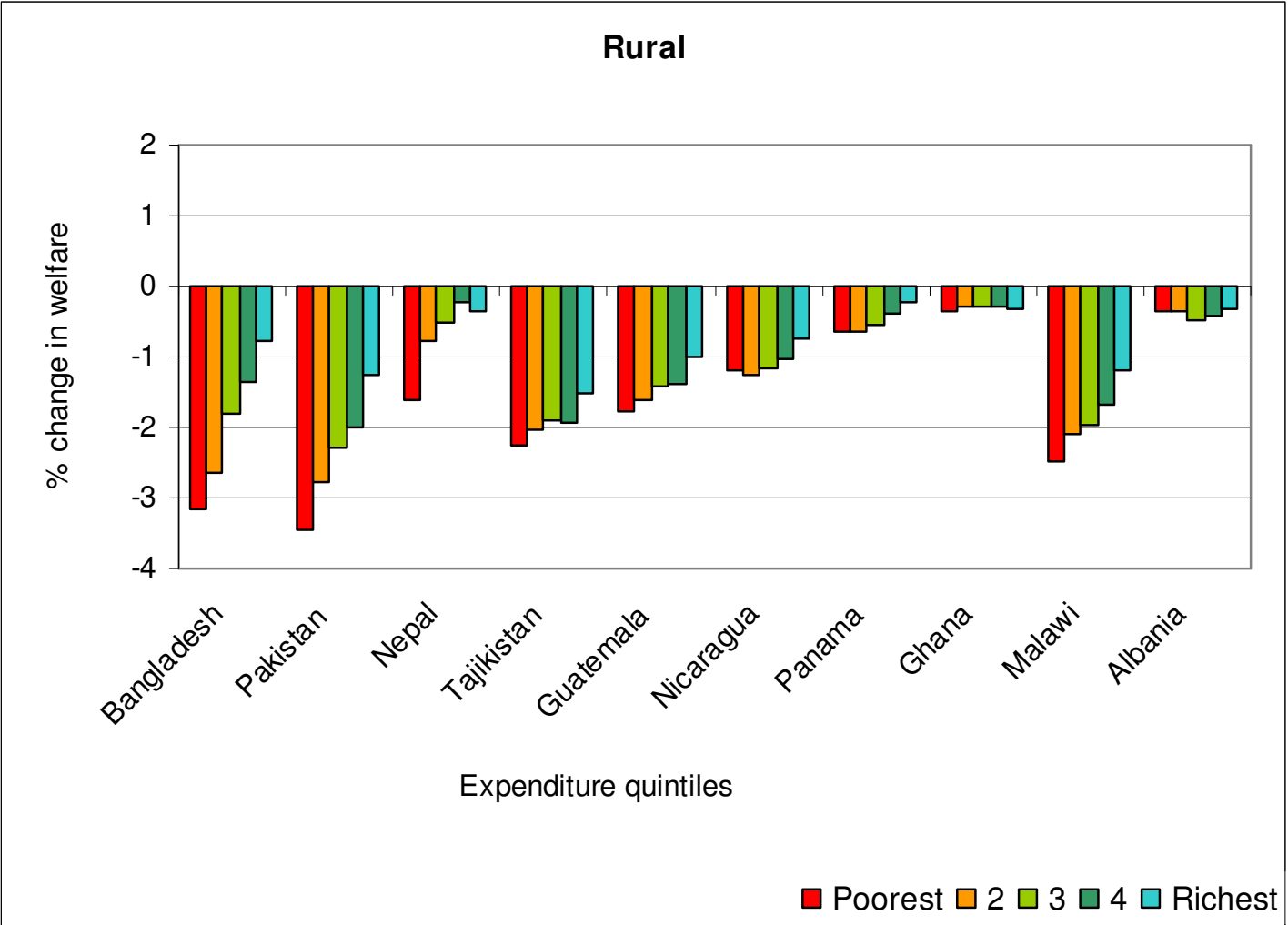


Food prices remain high in developing countries despite a declining international prices

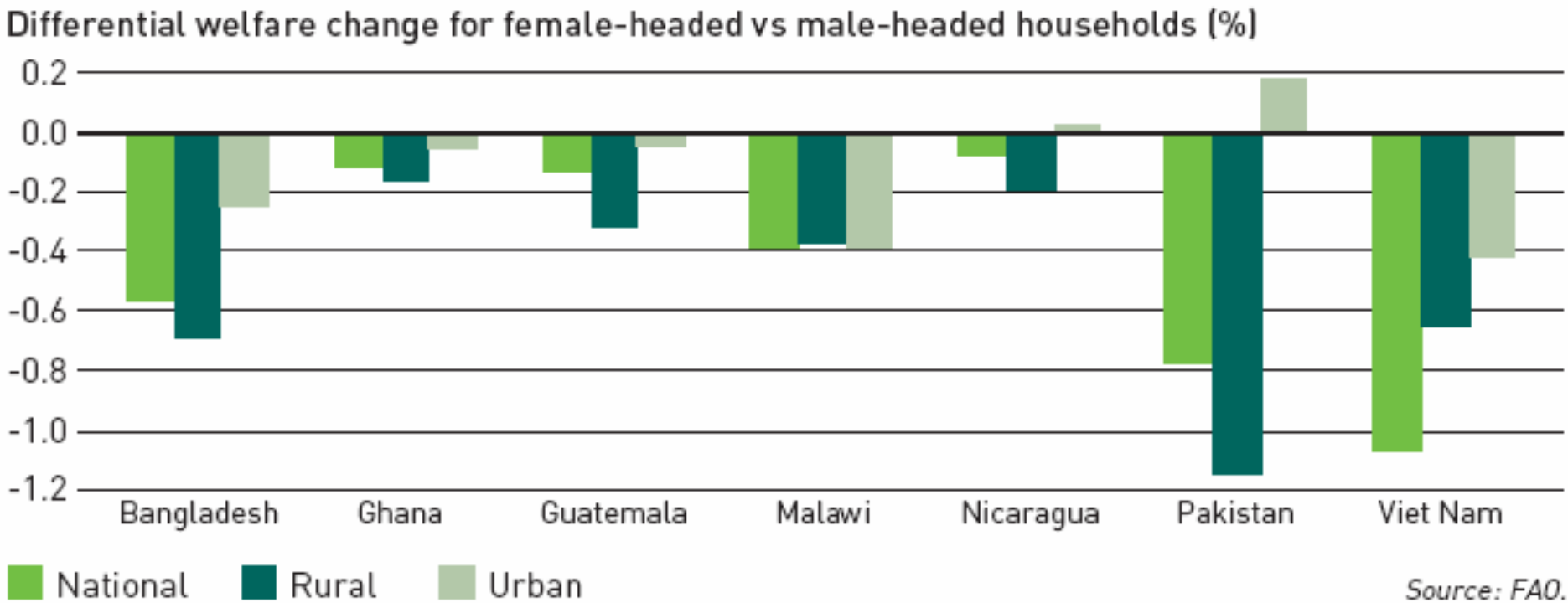


Maize prices 2007 – 2009 (US dollars per tonne)

The poor suffer most from increases in staple food prices



Food crisis hits female headed households harder

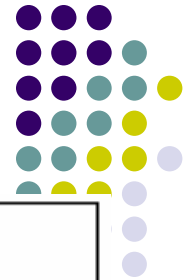


Financial crisis is making things worse

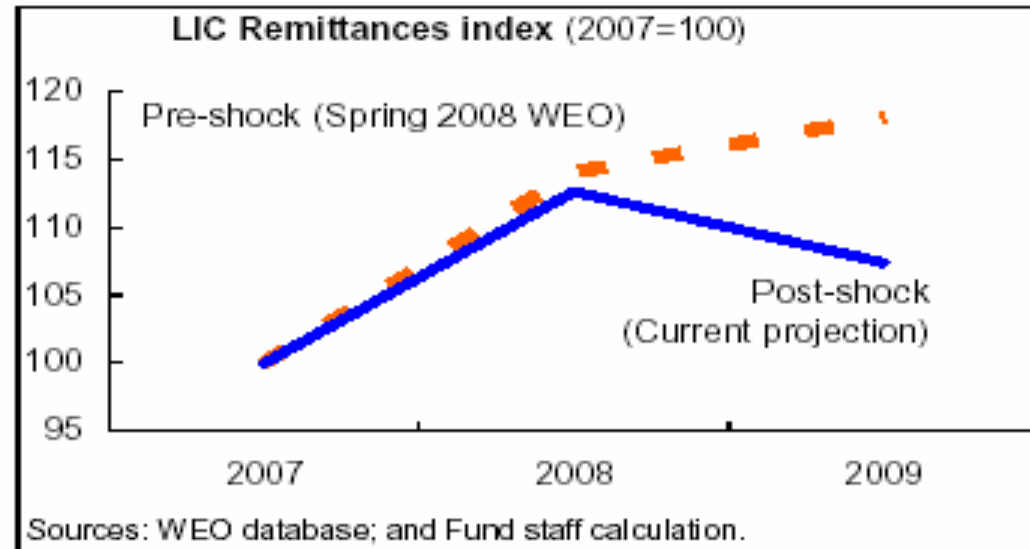


- About 30% of LICs highly vulnerable to impact of financial crisis, of which 50% in SSA (IMF data)
- Highly vulnerable countries face declines in GDP up to 5% (IMF data)
- Food prices have decreased together with food exports
- Volume of economic activities is reduced
- Financial inflows in LICs (private investments, aid, remittances) decreasing
- Reduced investments in rural areas – long term impact

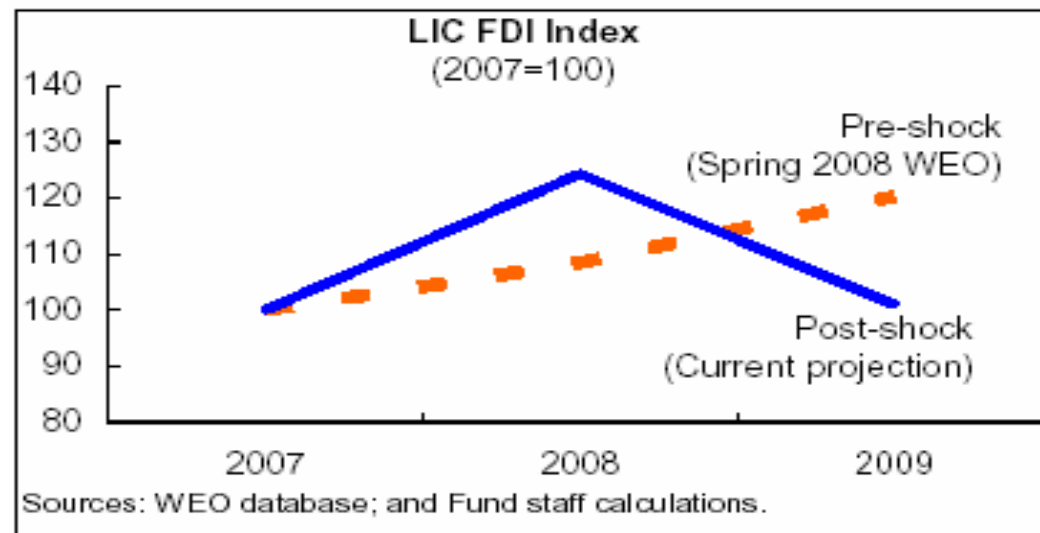
Reduced financial inflows



Remittances



Foreign Direct Investments



Agricultural employment, poverty and vulnerability



| | agricultural employment share on total employment (%) | working poor (USD2-a-day) share on total employment (%) | vulnerable employment shares on total employment (%) | | |
|-------------------------------------|---|---|--|-------------|-------------|
| | | | total | males | females |
| World | 34.4 | 40.6 | 50.6 | 49.1 | 52.7 |
| SSA | 62.5 | 82 | 77.4 | 72.0 | 84.4 |
| SA | 48.2 | 80.9 | 77.5 | 74.3 | 85.1 |
| EA | 38.6 | 33.0 | 55.5 | 50.8 | 61 |
| Developed economies & EU | 3.9 | - | 10.1 | 11.4 | 8.6 |

Source: elaborated from ILO Global employment trends 2009 (2007 data)

Key messages



- to fight hunger and poverty we have to enhance rural employment
- gender is a key dimension in food security, employment and poverty reduction
- decent rural employment provides opportunities to reduce gender inequalities
 - helps women reduce their reproductive burden
 - increases productivity and incomes
 - enhances participation of men and women in policy development and rural organizations

Thank you!

